

***lenovo***

# Lenovo S850

Quick Start Guide v1.0



Read this guide carefully before using your smartphone.

# Technical specifications



## Model and system

Model: Lenovo S850

System: Android 4.4



## Dimensions and weight

Height: 141.2 mm (5.56 inches)

Width: 71.5 mm (2.81 inches)

Depth: 8.2 mm (0.32 inches)

Weight: 140 g (0.31 lb)



## Processor

Processor: MT6582V/W, quad-core, 1.3 GHz



## Camera

Type: CMOS

Pixels: 13.0 megapixels (back) + 5.0 megapixels (front)



## Battery

Battery: 2150 mAh



## Display

Size: 5 inches

Screen: multi-touch

Resolution: 1280 × 720 pixels

LCD type: IPS

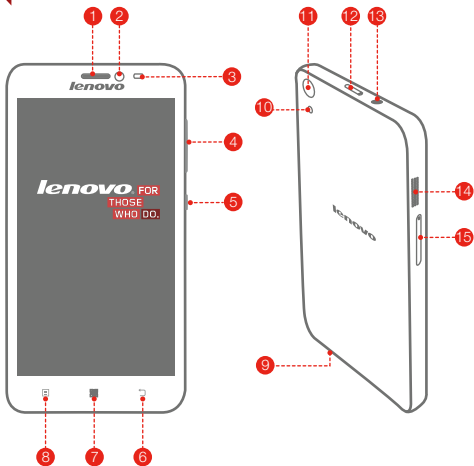


## Wireless Communication

Bluetooth 4.0; WLAN; WCDMA, GSM; GPS

① Depending on the measuring method, the dimensions and weight might vary slightly.

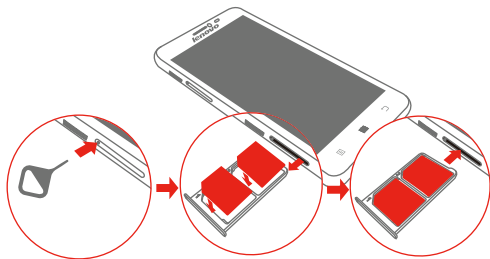
# First glance



- |                      |                       |                          |
|----------------------|-----------------------|--------------------------|
| 1 Receiver           | 2 Front-facing camera | 3 Light/Proximity sensor |
| 4 Volume buttons     | 5 On/Off button       | 6 Back key               |
| 7 Home key           | 8 Menu key            | 9 Microphone             |
| 10 Flashlight        | 11 Rear-facing camera | 12 Micro USB connector   |
| 13 Headset connector | 14 Speaker            | 15 Micro-SIM-card tray   |

## Installing the Micro SIM card

A Micro SIM card provided by your carrier is required in order to use cellular services. Install the Micro SIM card as shown.

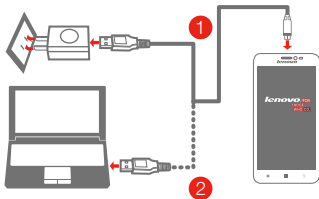


- Step 1.** Insert the SIM eject tool that comes with your smartphone into the hole in the Micro-SIM-card tray.
- Step 2.** Pull out the Micro-SIM-card tray and position the Micro SIM card into the tray in correct orientation.
- Step 3.** Carefully insert the tray with the installed Micro SIM card back into the slot.

- ⓘ Only Micro SIM cards work with your smartphone. Always turn off your smartphone first before you insert or remove a Micro SIM card. Insert or remove a Micro SIM card with your smartphone on may damage your Micro SIM card or smartphone permanently.

# Charging the battery

Charge the battery as shown.



**Method 1.** Connect your smartphone to a power outlet using the cable and USB power adapter that come with your smartphone.

**Method 2.** Connect your smartphone to a computer using the cable that comes with your smartphone.



Low battery power

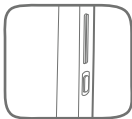


Fully charged



Charging

## Turning on or turning off your smartphone



**Turn on:** Press and hold the On/Off button until the Lenovo logo appears.

**Turn off:** Press and hold the On/Off button for a few seconds, then tap **Power off**.

**Restart:** Press and hold the On/Off button for about 10 seconds.

- Your smartphone has a built-in rechargeable battery. For more information about battery safety, see the "Built-in rechargeable battery notice" in the *Important Product Information Guide* shipped with your smartphone. The battery in this product cannot be easily replaced by users themselves.

## Learning more

To learn more information about your Lenovo smartphone and obtain the latest smartphone manuals, go to:  
<http://support.lenovo.com/>.

### Getting support

For support on network service and billing, contact your wireless network operator. For instructions on how to use your device, go to: <http://support.lenovo.com/>.

### European Union conformity



### Radio and Telecommunications Terminal Equipment Directive

This product is in compliance with the essential requirements and other relevant provisions of the Radio and Telecommunications Terminal Equipment Directive, 1999/5/EC.

### Legal notices

Lenovo and the Lenovo logo are trademarks of Lenovo in the United States, other countries, or both.

Other company, product, or service names may be trademarks or service marks of others.

First Edition (May 2014) © Copyright Lenovo 2014.

**Reduce | Reuse | Recycle**

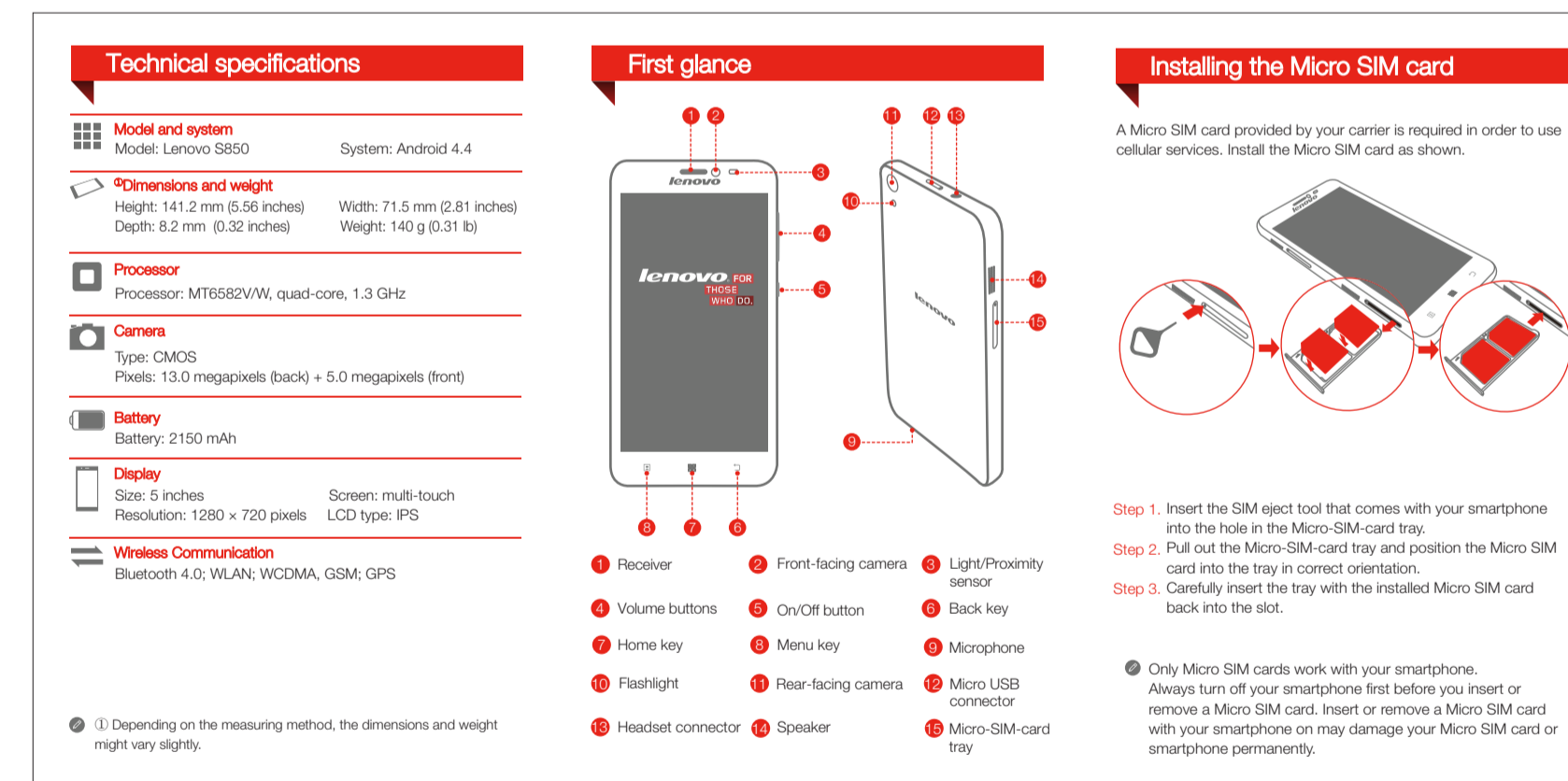
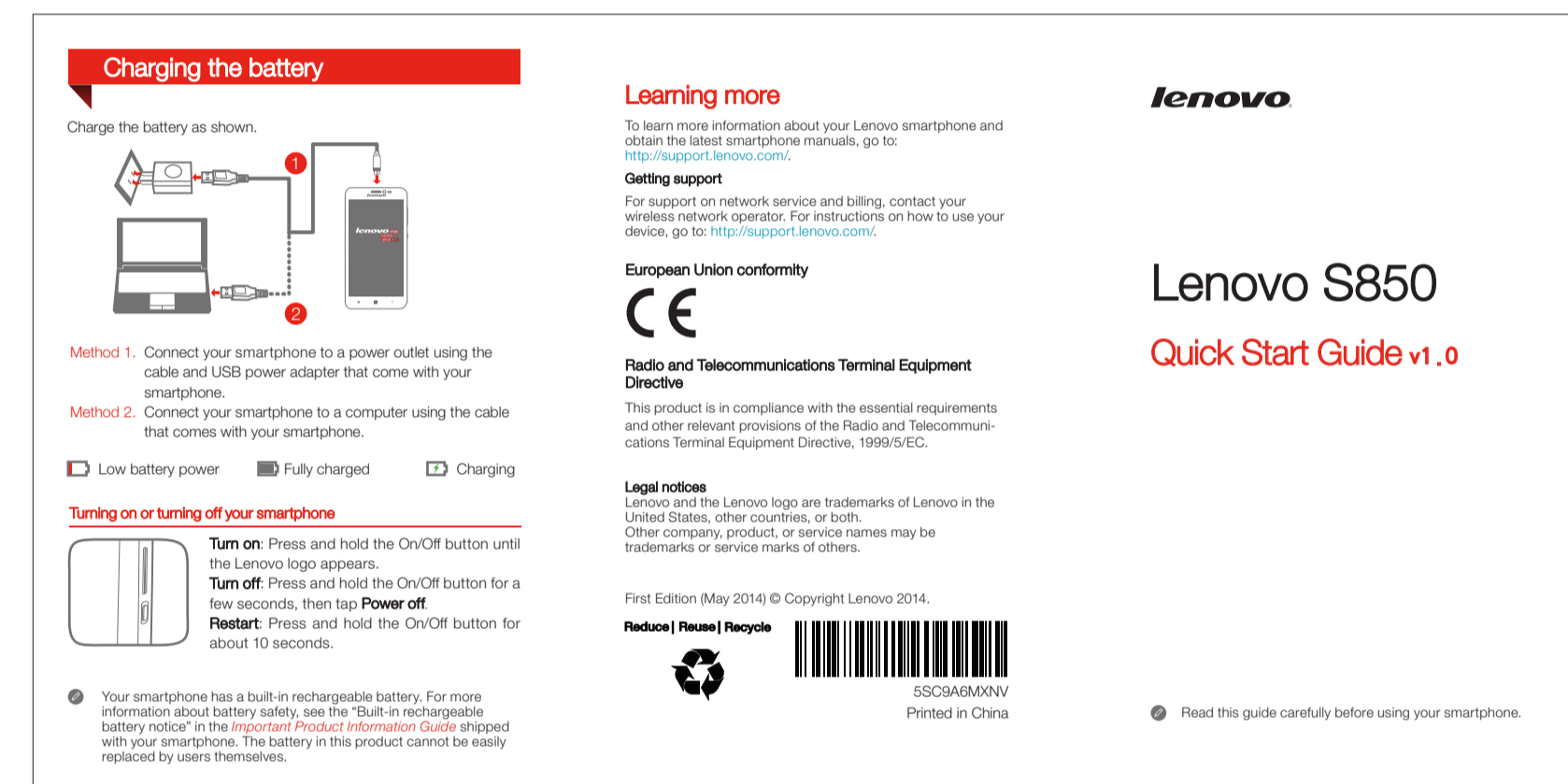


5SC9A6MXNV

Printed in China

NOTES:

- 1、英文字体: Helvetica Neun LT Std (45light)  
中文字体: 汉仪中黑简体
- 2、模板中的“X”为可变量, 需要以实际数据及信息为准
- 3、“First glance” & “Prepare your phone” & “Charging the battery” 三章中的描述以及图片需要以实际为准
- 4、编辑文字时, 请不要移动或者改变原本的文字框的位置。
- 5、保证封面标识Lenovo Logo、产品名称, 封底标识条码和料号。



pantone 424c

pantone 485c

pantone 484c

<b>Designer</b>	Luohongwei			<b>Release</b>	20140329		
<b>PROJECT NAME</b>	Lenovo XXXXX	<b>MATERIAL</b>	105G哑粉	<b>FOLD</b>	荷包折	<b>Colour</b>	
<b>PART NAME</b>	Quick Start Guide(110x74)	<b>PROCESS</b>	Cut	<b>SURFACE</b>	覆亚油	<b>CMYK</b>	
<b>PART NUMBER</b>	XXXXXXXXXX	<b>SIZE</b>	110x74(Close)		110x222(Open)	pantone 485c	Unit:mm